

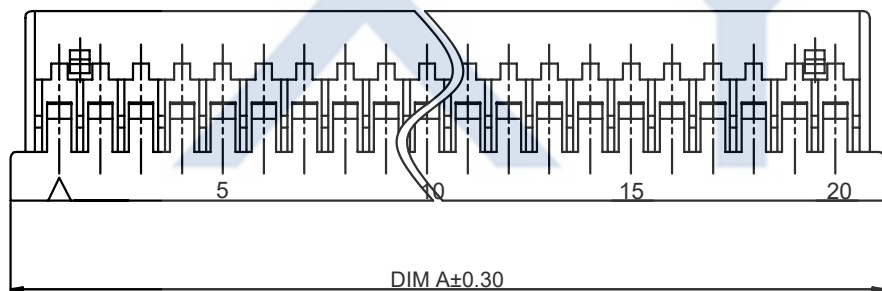
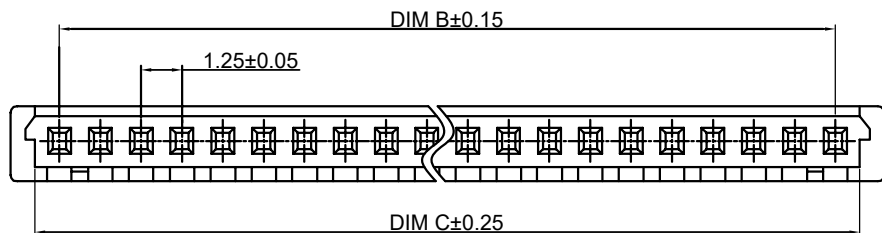
DRAWING FOR CUSTOMER

- SPEC.:
- Voltage Rating:150V AC/DC
 - Current Rating:1A AC/DC
 - Withstanding Voltage:500V AC/minute
 - Contact Resistance:20mΩ max
 - Insulation Resistance:500MΩ min
 - Temperature Range:-35°C~+85°C

- Material:
- Insulator:PA66 UL94V-0
 - Color:Gray

KB912-X X H 1 B

Part No. Version
Housing Mold No.



Poles	Dimensions(mm)		
	A	B	C
02	4.40	1.25	2.90
03	5.65	2.50	4.15
04	6.90	3.75	5.40
05	8.15	5.00	6.65
06	9.40	6.25	7.90
07	10.65	7.50	9.15
08	11.90	8.75	10.40
09	13.15	10.00	11.65
10	14.40	11.25	12.90
11	15.65	12.50	14.15
12	16.90	13.75	15.40
13	18.15	15.00	16.65
14	19.40	16.25	17.90
15	20.65	17.50	19.15
20	26.90	23.75	25.40
25	33.15	30.00	31.65
30	39.40	36.25	37.90

XYCO 东莞市轩业电子科技有限公司
TEL: 0769-8297 9981/2/3 http://www.XYCO.com.cn

2017-05-15	B	优化尺寸	KB912-XXH1B	Devin	TOLERANCE 公差	DRAWING 設計者	Devin	KB912-XXH1B		UNIT 單位	mm	PRODUCT NAME 產品名稱	DF14 PH1.25mm Wire To Board Housing
2014-06-26	A		KB912-XXH1A	Devin	.X±0.30 .XX±0.20 .XXX±0.10	CHECKED 審查	Thomas	PART NO. 料號					
DATE 日期	VER 版本	CHANGE HISTORY 變更歷史	CHANGED NAME 修改後料號	DRAWING 變更者		APPROVED 核准	William	DWG NO. 圖號	PE2910A				