

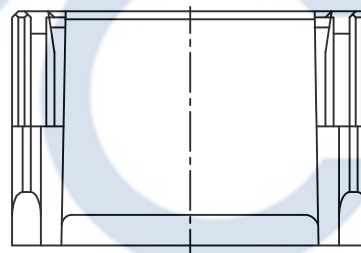
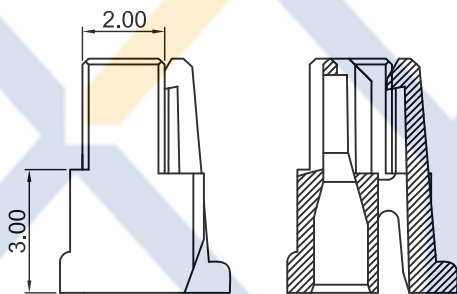
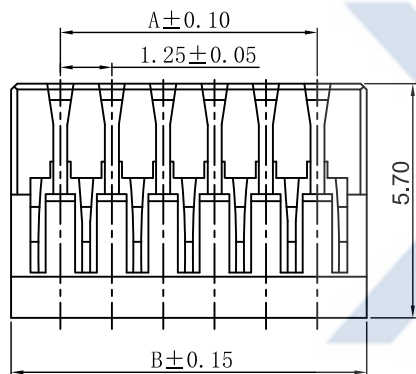
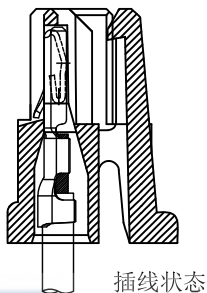
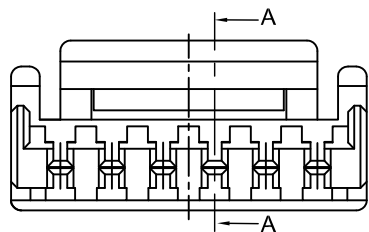
# DRAWING FOR CUSTOMER

KB918-XX H L 2 A

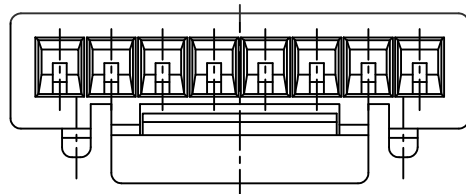
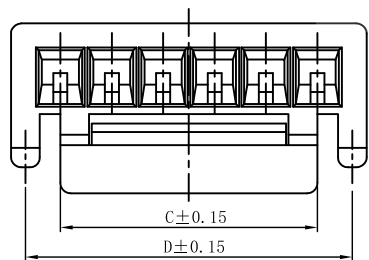


- SPEC.:
- Rated Voltage:50V AC,DC
  - Rated Current:1A AC,DC
  - Withstand Voltage:500V AC/minute
  - Contact Resistance:20mΩ max
  - Insulation Resistance:100MΩ min
  - Temperature Range:-25℃~+85℃
  - Applicable wire:AWG#28~32

- Material:
- Insulator:PA66 UL94V-0
  - Color:White



Poles	Dimensions(mm)			
	A	B	C	D
02	1.25	3.65	2.10	3.20
03	2.50	4.90	3.00	4.45
04	3.75	6.15	4.05	5.70
05	5.00	7.40	4.25	6.70
06	6.25	8.65	6.25	7.95
07	7.50	9.90	6.25	9.20
08	8.75	11.15	6.25	7.95
09	10.00	12.40	6.25	7.95
10	11.25	13.65	8.20	10.00
11	12.50	14.90	8.20	10.00
12	13.75	16.15	8.20	10.00
13	15.00	17.40	8.20	10.00
14	16.25	18.65	8.20	10.00
15	17.50	19.90	8.20	10.00



2~7Pin

8~15Pin

**XYCO** 东莞市轩业电子科技有限公司  
TEL: 0769-8297 9981/2/3 http://www.XYCO.com.cn

2016-11-04		A	CHANGE HISTORY 變更歷史	KB918-XXHL2A	Devin	TOLERANCE 公差	DRAWING 設計者	Devin	KB918-XXHL2A		UNIT 單位	mm	PRODUCT NAME 產品名稱	GHR PH1.25mm Wire To Board Housing With Lock
DATE 日期	VER 版本	CHANGED NAME 修改後料號				DRAWING 變更者	.X=±0.30 .XX=±0.20 .XXX=±0.10	CHECKED 審查	Thomas	PART NO. 料號				
								APPROVED 核准	William	DWG NO. 圖號	PE1705011A			