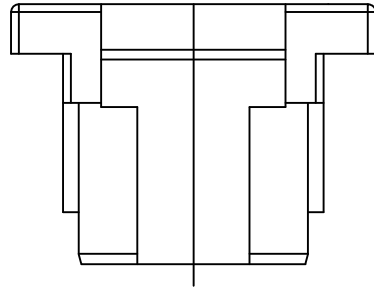


# DRAWING FOR CUSTOMER



### KB901-XX H B L 2 A

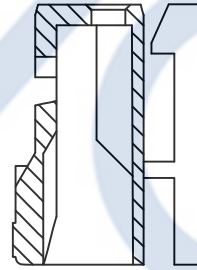
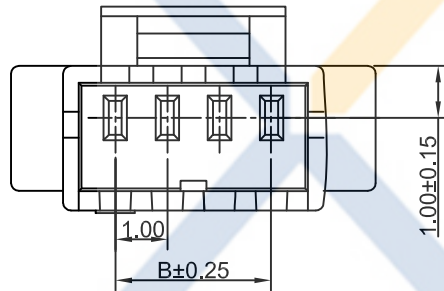
Pin No.	Version
Housing	Mold No.
Back buckle	With Lock

■ Specifications:

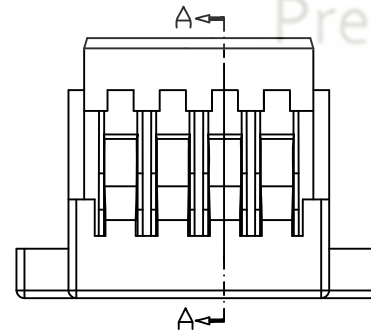
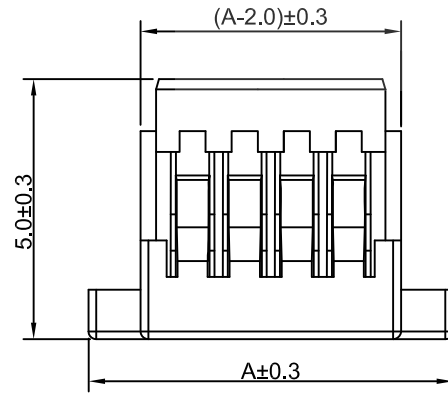
- Rated Voltage: 30V AC,DC
- Rated Current: 1A AC,DC
- Withstand Voltage: 500V AC/minute
- Contact Resistance: 20mΩ, (MAX.)
- Insulation Resistance: 100MΩ, (MIN.)
- Temperature Range: -25°C~+85°C

■ Material and Finish:

- Color: natural(white)
- Material: PA66 UL94-V0



SECTION:(A-A)



PART NO.	DIMENSION		PART NO.	DIMENSION	
	A	B		A	B
02	5.00	1.00	12	15.00	11.00
03	6.00	2.00	13	16.00	12.00
04	7.00	3.00	14	17.00	13.00
05	8.00	4.00	15	18.00	14.00
06	9.00	5.00	16	19.00	15.00
07	10.00	6.00	17	20.00	16.00
08	11.00	7.00	18	21.00	17.00
09	12.00	8.00	19	22.00	18.00
10	13.00	9.00	20	23.00	19.00
11	14.00	10.00			

**XYCO PRECISION CONNECTORS**

TEL: 0769-8297 9981/2/3 <http://www.XYCO.com.cn>

DATE 日期	VER 版本	CHANGE HISTORY 變更歷史	CHANGED NAME 修改後料號	DRAWING 變更者	TOLERANCE 公差 .X=±0.30 .XX=±0.20 .XXX=±0.10	DRAWING 設計者	John	KB901-XXHBL2A
2015-08-05	A		KB901-XXHBL2A	John		CHECKED 審查	Thomas	PART NO. 料號
						APPROVED 核准	William	DWG NO. 圖號 PE2011A

UNIT 單位	mm	PRODUCT NAME 產品名稱	JST SH1.0mm wire to board Housing with back lock
------------	----	----------------------	---